

BIRCOplus

Light concrete channel – ideal laying

BECAUSE WATER
IS PRECIOUS.



BIRCOplus, the ideal concrete drainage channel for private garages and driveways. This channel is made of high-quality C 40/50 concrete and is characterised by its easy transportability and simple installation. The pavement surface can be laid up flush to the channel grating and no additional concrete encasing is necessary. BIRCOplus: easy to handle with safe, reliable performance.

HIGHEST QUALITY STANDARDS

100% made in our own production facility

BIRCO is dedicated to developing first-class drainage solutions made from high-quality, robust concrete. This material gives our channels and systems exceptional durability - even under the toughest conditions. The concrete impresses with minimal water absorption, excellent abrasion resistance and resistance to frost and de-icing salt, which makes our products unrivalled in terms of lateral stability.

The high quality of our materials, coupled with the sophisticated design of BIRCO channel systems, guarantees optimum operating conditions on any construction site and promises efficient, cost-effective installation. Our solutions not only stand for the highest safety standards and long-term investment protection, but also fulfil the strict requirements of BS EN 1433 standard. With our in-depth understanding of customer needs and project requirements, BIRCO products not only deliver outstanding quality and performance, but also future-oriented, sustainable drainage concepts.



FACTS

- + Channel system: NW 100
- + Low-weight concrete channel, with and without inbuilt falls
- + Lengths: 0.50 and 1.00 meter
- + High-quality C 40/50 concrete
- + A variety of clamping gratings made of galvanised steel
- + DI grating screwed on fastening bracket available
- + Inline outfall units with outstanding drainage performance
- + CE/UKCA compliant
- + Load class: A 15 – C 250

AREAS OF APPLICATION

- + Garages and driveways
- + Landscaping
- + Housing and urban development
- + Sports facilities
- + Railway platforms



A 15 to C 250

1 HIGH-QUALITY MATERIALS

- + Sturdy, covered concrete edges
- + Corrosion protection thanks to the frost and de-icing salt resistant concrete grade C 40/50

2 OPTIMUM DRAINAGE

- + Best surface usage thanks to fast water drainage

3 ATTRACTIVE DESIGN

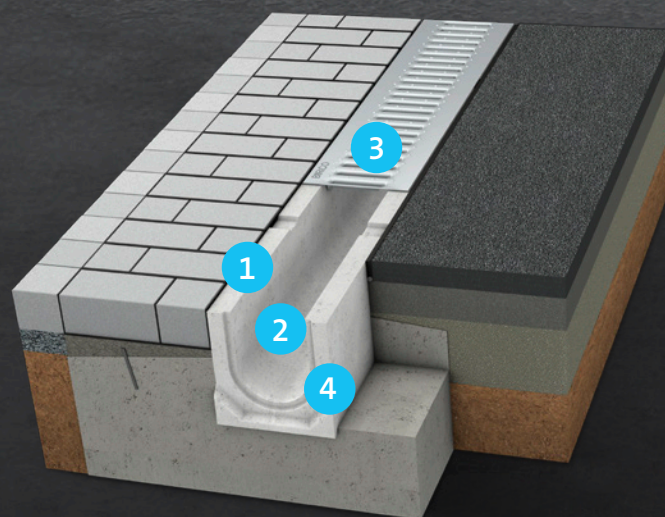
- + Design options with clamping gratings made of galvanised steel
- + Screw-on DI bar gratings

4 VISIBLE SEALING GAP

- + Safety sealing gap at the channel joint (can be grouted with BIRCO SF-Connect sealant)

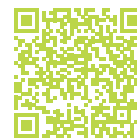
EASY AND SAFE INSTALLATION

- + Easy transport, simple handling thanks to the low weight



BIRCOplus | DN 100

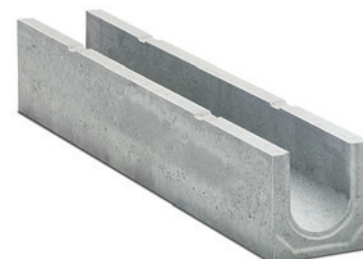
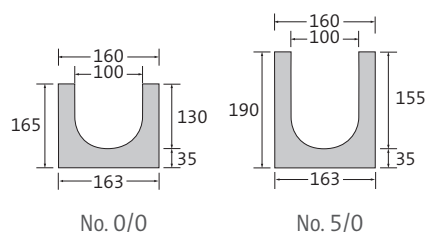
Light concrete channel – Ideal laying



CHANNEL ELEMENT | WITHOUT INBUILT FALL

AQUA*

- + High-quality C 40/50 concrete
- + Concrete edge not visible under the grating
- + Reservation for sealing joint



DESCRIPTION	LENGTH	WIDTH	HEIGHT AT TONGUE/GROOVE	WEIGHT	CLASSIFICATION EN 1433	PALLET	ARTICLE NO.
Channel No. 0/0	500 mm	160 mm	165/165 mm	19.0 kg	C 250	40 units	012031 •
Channel No. 0/0	1000 mm	160 mm	165/165 mm	37.0 kg	C 250	30 units	012026 •
Channel No. 0/0 with socket DN 110	1000 mm	160 mm	165/165 mm	37.0 kg	C 250	30 units	012033 •
Channel No. 5/0	1000 mm	160 mm	190/190 mm	41.0 kg	C 250	25 units	012027 •

CHANNEL ELEMENT | 0.5 % INBUILT FALL

AQUA*

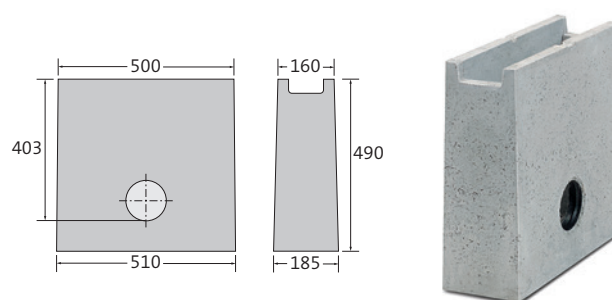
- + High-quality C 40/50 concrete
- + Concrete edge not visible under the grating
- + Reservation for sealing joint

DESCRIPTION	LENGTH	WIDTH	HEIGHT AT TONGUE/GROOVE	WEIGHT	CLASSIFICATION EN 1433	PALLET	ARTICLE NO.
Channel No. 1	1000 mm	160 mm	165/170 mm	37.5 kg	C 250	25 units	012001 •
Channel No. 2	1000 mm	160 mm	170/175 mm	38.3 kg	C 250	25 units	012002 •
Channel No. 3	1000 mm	160 mm	175/180 mm	39.0 kg	C 250	25 units	012003 •
Channel No. 4	1000 mm	160 mm	180/185 mm	39.8 kg	C 250	25 units	012004 •
Channel No. 5	1000 mm	160 mm	185/190 mm	40.6 kg	C 250	25 units	012005 •
Channel No. 6	1000 mm	160 mm	190/195 mm	41.4 kg	C 250	20 units	012006 •

OUTFALL UNIT | 1-PIECE

AQUA*

- + High-quality C 40/50 concrete
- + For 1 or 2-sided channel connection up to No. 6
- + PP silt bucket
- + Internal odour trap, suitable for PP and PVC pipe connection DN 110
- + Integrated socket with joint for DN 110 pipe connection



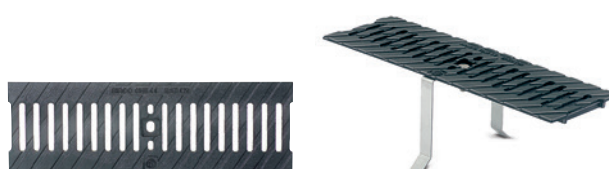
DESCRIPTION	LENGTH	WIDTH	HEIGHT	WEIGHT	CLASSIFICATION EN 1433	PALLET	ARTICLE NO.
Up to No. 6	500 mm	160 mm	490 mm	58.0 kg	C 250	12 units	012035 •

External odour trap for outlet DN 110 with socket (article No: 605010) on request.

HEELSURE SLOTTED GRATING | DI

AQUA*

- + Black dip-painted
- + 2 M12/A2 bolts per meter with fastening bracket
- + The grating adds 5 mm to the height of the channel/outfall unit



LENGTH	WIDTH	HEIGHT	WEIGHT	INLET OPENING	INLET CROSS SECTION	CLASSIFICATION EN 1433	PALLET	ARTICLE NO.
500 mm	158 mm	5 mm	3.4 kg	SW 85/10 mm	312 cm ² /m	C 250	150 units	012070

Also available with cathodic or RAL powder coating colour on request.

BAR GRATING | GALVANISED STEEL | FOR CLAMPING

AQUA*

- + The grating adds 5 mm to the height of the channel/outfall unit



LENGTH	WIDTH	HEIGHT	WEIGHT	INLET OPENING	INLET CROSS SECTION	CLASSIFICATION EN 1433	PALLET	ARTICLE NO.
500 mm	158 mm	2.5 mm	1.3 kg	SW 80/12 mm	334 cm ² /m	A 15	50 units	012066 •
1000 mm	158 mm	2.5 mm	2.4 kg	SW 80/12 mm	334 cm ² /m	A 15	200 units	012056 •

MESH GRATING | HOT-DIP GALVANISED STEEL | FOR CLAMPING

AQUA*

- + The grating adds 2 mm to the height of the channel/out-fall unit



LENGTH	WIDTH	HEIGHT	WEIGHT	INLET OPENING	INLET CROSS SECTION	CLASSIFICATION EN 1433	PALLET	ARTICLE NO.
500 mm	158 mm	2 mm	1.7 kg	MW 30/16 mm	800 cm ² /m	B 125	200 units	012062 •
1000 mm	158 mm	2 mm	3.3 kg	MW 30/16 mm	800 cm ² /m	B 125	200 units	012052 •
500 mm	158 mm	2 mm	1.7 kg	MW 30/10 mm	720 cm ² /m	B 125	200 units	012063 •
1000 mm	158 mm	2 mm	3.4 kg	MW 30/10 mm	720 cm ² /m	B 125	200 units	012053 •

BIRCOplus | Accessories

Light concrete channel – Ideal laying

END CAP | HOT-DIP GALVANISED STEEL

AQUA*

+ With attached outlet connection

DESCRIPTION	FOR HEIGHT	WIDTH	WEIGHT	ARTICLE NO.
End cap, No. 0/0 – 2	165 – 175 mm	160 mm	0.3 kg	012090 •
End cap, No. 3 – 6	175 – 195 mm	160 mm	0.3 kg	012091 •
End cap with socket DN 110, No. 0/0	165 mm	160 mm	0.6 kg	012045 •
End cap with socket DN 110, No. 5/0	190 mm	160 mm	0.7 kg	012046 •
End cap with socket DN 110, No. 6	215 mm	160 mm	0.8 kg	012047 •

BIRCOplus Drainage performance

The channel systems from BIRCO provide excellent drainage performance.

In addition to this table, BIRCO offers a project-specific hydraulic calculation service.

BIRCOplus DN 100

LENGTH = 1000 mm	DRAINAGE PERFORMANCE AT THE CHANNEL END	SECTION DE DRAINAGE À LA FIN DU CHANNEL
Channel No. 0/0	6.10 l/sec	110.0 cm ²
Channel No. 1	6.70 l/sec	115.0 cm ²
Channel No. 2	7.00 l/sec	120.0 cm ²
Channel No. 3	7.30 l/sec	125.0 cm ²
Channel No. 4	7.60 l/sec	130.0 cm ²
Channel No. 5	7.90 l/sec	135.0 cm ²
Channel No. 5/0	7.50 l/sec	135.0 cm ²
Channel No. 6	8.20 l/sec	140.0 cm ²

The table can only give guidelines for the dimensioning. On-site conditions such as positions of manholes already installed, number of channels lines etc. cannot and have not been taken into account. We therefore recommend making use of our hydraulic calculation service for a draft proposal.