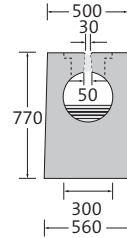


BIRCOsolid slot channels

Pfuhler System Z – Type K DN 300

Slot channel elements | with 0.5% internal inbuilt fall | Class D 400

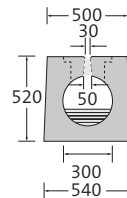
- + Monolithic concrete body
- + Interrupted slot, slot width 30/50 mm
- + With cast honeycomb grating (500/287/30, MW 20/75 mm)
- + With hot-dipped galvanised solid steel angle for combi-closure system
- + Visible sealing joint



| Description | Length | Width at top/bottom | Construction height | Weight | Inlet cross section | Load class DIN EN 1433 | Article No. |
|---------------|---------|---------------------|---------------------|-----------|------------------------|------------------------|-------------|
| Channel No. 1 | 4000 mm | 500/560 mm | 770 mm | 3240.0 kg | 239 cm ² /m | A 15 – D 400 | 035230501 |
| Channel No. 2 | 4000 mm | 500/560 mm | 770 mm | 3270.0 kg | 239 cm ² /m | A 15 – D 400 | 035230502 |
| Channel No. 3 | 4000 mm | 500/560 mm | 770 mm | 3310.0 kg | 239 cm ² /m | A 15 – D 400 | 035230503 |
| Channel No. 4 | 4000 mm | 500/560 mm | 770 mm | 3355.0 kg | 239 cm ² /m | A 15 – D 400 | 035230504 |
| Channel No. 5 | 4000 mm | 500/560 mm | 770 mm | 3405.0 kg | 239 cm ² /m | A 15 – D 400 | 035230505 |

Slot channel elements | with 0.5% internal inbuilt fall | Class F 900

- + Monolithic concrete body
- + Interrupted slot, slot width 30/50 mm
- + With cast honeycomb grating (500/287/30, MW 20/75 mm)
- + With hot-dipped galvanised solid steel angle for combi-closure system
- + Visible sealing joint



| Description | Length | Width at top/bottom | Construction height | Weight | Inlet cross section | Load class DIN EN 1433 | Article No. |
|---------------|---------|---------------------|---------------------|-----------|------------------------|------------------------|-------------|
| Channel No. 1 | 4000 mm | 500/540 mm | 520 mm | 2000.0 kg | 239 cm ² /m | A 15 – F 900 | 035230801 |
| Channel No. 2 | 4000 mm | 500/540 mm | 520 mm | 2030.0 kg | 239 cm ² /m | A 15 – F 900 | 035230802 |
| Channel No. 3 | 4000 mm | 500/540 mm | 520 mm | 2070.0 kg | 239 cm ² /m | A 15 – F 900 | 035230803 |
| Channel No. 4 | 4000 mm | 500/540 mm | 520 mm | 2115.0 kg | 239 cm ² /m | A 15 – F 900 | 035230804 |
| Channel No. 5 | 4000 mm | 500/540 mm | 520 mm | 2165.0 kg | 239 cm ² /m | A 15 – F 900 | 035230805 |

We reserve the right to make technical or other changes even without prior notification.
 Class D 400 = Slot channels can be installed without a load-bearing foundation.
 Class F 900 = Slot channels must be installed with a load-bearing foundation.
 Special lengths and laying spades available upon request.



Slot channel element | without internal inbuilt fall | Class D 400

- + Monolithic concrete body
- + Interrupted slot, slot width 30/50 mm
- + With cast honeycomb grating (500/287/30, MW 20/75 mm)
- + With hot-dipped galvanised solid steel angle for combi-closure system
- + Visible sealing joint

| Description | Length | Width at top/bottom | Construction height | Weight | Inlet cross section | Load class DIN EN 1433 | Article No. |
|-------------|---------|---------------------|---------------------|-----------|------------------------|------------------------|-------------|
| Channel | 4000 mm | 500/560 mm | 770 mm | 3235.0 kg | 239 cm ² /m | A 15 – D 400 | 035230526 |

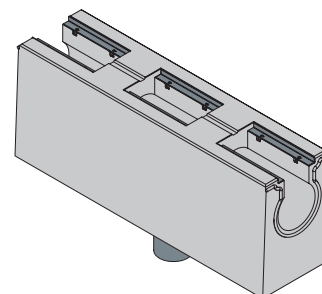
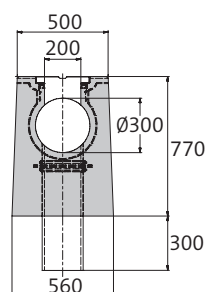
Slot channel element | without internal inbuilt fall | Class F 900

- + Monolithic concrete body
- + Interrupted slot, slot width 30/50 mm
- + With cast honeycomb grating (500/287/30, MW 20/75 mm)
- + With hot-dipped galvanised solid steel angle for combi-closure system
- + Visible sealing joint

| Description | Length | Width at top/bottom | Construction height | Weight | Inlet cross section | Load class DIN EN 1433 | Article No. |
|-------------|---------|---------------------|---------------------|-----------|------------------------|------------------------|-------------|
| Channel | 4000 mm | 500/540 mm | 520 mm | 1995.0 kg | 239 cm ² /m | A 15 – F 900 | 035230826 |

Slot channel element | without internal inbuilt fall | with horizontal outlet | Class D 400

- + Monolithic concrete body
- + 2-sided channel connection
- + With PEHD pipe support DA 225
- + PEHD pipe support DA 160 or DA 315 alternatively upon request
- + With cast honeycomb grating (500/287/30, MW 20/75 mm)
- + With hot-dipped galvanised solid steel angle for combi-closure system
- + Visible sealing joint



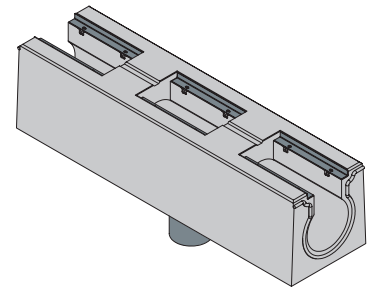
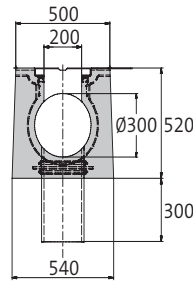
| Description | Length | Width at top/bottom | Construction height | Weight | Load class DIN EN 1433 | Article No. |
|-------------|---------|---------------------|---------------------|-----------|------------------------|-------------|
| Channel | 2000 mm | 500/560 mm | 770 mm | 1495.0 kg | A 15 – D 400 | 035230531 |

We reserve the right to make technical or other changes even without prior notification.
 Class D 400 = Slot channels can be installed without a load-bearing foundation.
 Class F 900 = Slot channels must be installed with a load-bearing foundation..
 Special lengths and laying spades available upon request.

BIRCOsolid slot channels Pfuhrer System Z Type K DN 300

Slot channel element | without internal inbuilt fall | with horizontal outlet | Class F 900

- + Monolithic concrete body
- + 2-sided channel connection
- + With PEHD pipe support DA 225
- + PEHD pipe support DA 160 or DA 315 alternatively upon request
- + With cast honeycomb grating (500/287/30, MW 20/75 mm)
- + With hot-dipped galvanised solid steel angle for combi-closure system
- + Visible sealing joint



| Description | Length | Width at top/bottom | Construction height | Weight | Load class DIN EN 1433 | Article No. |
|-------------|---------|---------------------|---------------------|----------|---------------------------|-------------|
| Channel | 2000 mm | 500/540 mm | 520 mm | 872.0 kg | A 15 – F 900 | 035230831 |

End caps



| Description | Width | For construction height | Weight | Article No. |
|--|--------|-------------------------|--------|-------------|
| End cap for load class D 400, galvanised | 500 mm | 770 mm | 5.3 kg | 035230547 |
| End cap for load class F 900, galvanised | 500 mm | 520 mm | 5.3 kg | 035230847 |

We reserve the right to make technical or other changes even without prior notification.
 Clas D 400 = Slot channels can be installed without a load-bearing foundation.
 Class F 900 = Slot channels must be installed with a load-bearing foundation..
 Special lengths and laying spades available upon request.