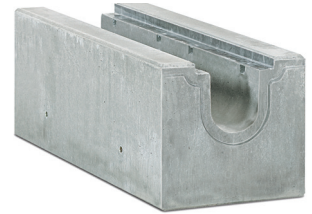
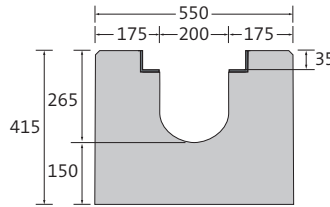


BIRCOsolid grid channels | NW 200

The reinforced concrete channel for use with mildly aggressive agents

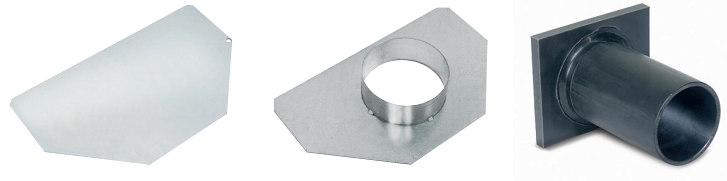
Channel elements | without internal inbuilt fall

- + With hot-dipped galvanised solid steel angle for combi-closure system
- + Visible sealing joint
- + Anchor sleeves on the side
- + Fitted with an interior lifting anchor
- + Also available with one-piece hot-dipped galvanised surface protection upon request



Description	Length	Width	Construction height at groove/tongue	Weight	Load class DIN EN 1433	Article No.
Channel No. 0/0	1000 mm	550 mm	415/415 mm	450.0 kg	A 15 – F 900	015201
Channel No. 0/0	1500 mm	550 mm	415/415 mm	680.0 kg	A 15 – F 900	015202
Channel No. 0/0	4000 mm	550 mm	415/415 mm	1800.0 kg	A 15 – F 900	015203

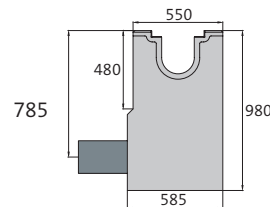
End caps



Description	Width	For construction height	Weight	Article No.
End cap, galvanised	550 mm	415 mm	3.1 kg	015213
End cap with outlet DN 200, galvanised	550 mm	415 mm	3.6 kg	015211
End cap with outlet DA 225, PEHD, factory assembled	550 mm	415 mm	6.4 kg	015212

In-line outfall unit | with pipe support | 1-piece

- + 1- or 2-sided channel connection
- + Galvanised silt bucket
- + Integrated pipe support for DN 200 connection
- + Without odour trap
- + With hot-dipped galvanised solid steel angle for combi-closure system
- + Visible sealing joint
- + Also available with one-piece hot-dipped galvanised surface protection upon request



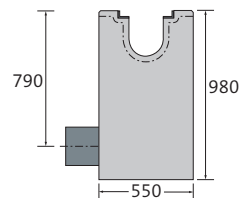
Description	Length	Width at angle/ground	Construction height	Weight	Load class DIN EN 1433	Article No.
In-line outfall unit	500 mm	550 mm	980 mm	435.5 kg	A 15 – F 900	015235

Exception up to D 400: Not for use across the carriage-way of highways or motorways



In-line outfall units | with PEHD pipe support | 1-piece

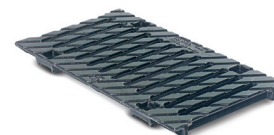
- + 1- or 2-sided channel connection
- + Galvanised silt bucket
- + PEHD pipe support DA 225 x 12.8 - SDR 17, length 300 mm
- + Lateral drainage connection
- + With hot-dipped galvanised solid steel angle for combi-closure system
- + Visible sealing joint
- + Also available with one-piece hot galvanised surface protection upon request



Description	Length	Width	Construction height	Weight	Load class DIN EN 1433	Article No.
In-line outfall unit	500 mm	550/585 mm	980 mm	431.1 kg	A 15 – F 900	015236

Cast slotted gratings

- + Black immersion-lacquered
- + 8 point per metre M12/A2 bolt connection



Description	Length	Width	Height	Weight	Inlet opening	Inlet cross section	Load class DIN EN 1433	Article No.
black	500 mm	317 mm	35 mm	17.3 kg	SW 200/18 mm	802 cm ² /m	A 15 – F 900	150278

SW = slot width, MW = mesh width, article no. with v = galvanised
Exception up to D 400: Not for use across the carriage- way of highways or motorways.

BIRCOsolid grid channels NW 200

Hangers for RD 16 piping | can be mounted externally

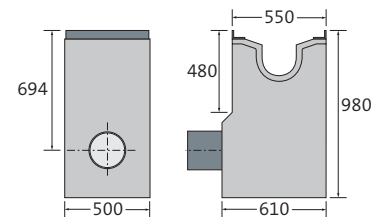
- + Commonly available RD 16 piping hangers are required for laying the concrete parts
- + For safety reasons, simple rope loops may not be used



Description	Weight	Article No.
Hanger RD 16	0.6 kg	606037

Shut-off outfall unit NW 400 | for channels NW 200 | 1-piece

- + 1- or 2-sided channel connection up to NW 400 (on request with end caps / adapter caps for channel connection mounted ex-works)
- + Manually operated valve flap DN 200
- + On request also with electrical or pneumatical valve flap
- + Galvanised silt-bucket
- + PEHD pipe support DA 225x12.8 - SDR 17 (length 300 mm)
- + Pipe support lateral to channel line
- + With hot-dipped galvanised solid steel angle for combi-closure system
- + Visible sealing joint
- + Other outlets on request
- + Not DIBt certificated



Description	Length	Width at angle/bottom	Construction height	Weight	Load class DIN EN 1433	Article No.
Shut-off outfall unit	500 mm	550/610 mm	980 mm	386.1 kg	A 15 – E 600	015439

Cast slotted gratings | twofold | for shut-off outfall unit NW 400

- + With key bushing
- + Black immersion-lacquered
- + Including 4-point M16/A2 per grating bolt connection



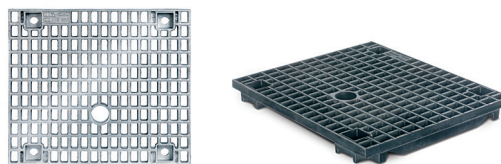
Description	Length	Width	Height	Weight	Inlet opening	Inlet cross section	Load class DIN EN 1433	Article No.
black	500 mm	537 mm	45 mm	45.2 kg	SW 190/16 mm	1771 cm ² /m	A 15 – E 600	150472

SW = slot width
Exception up to D 400: Not for use across the carriage- way of highways or motorways



Mesh gratings | cast | for shut-off outfall unit NW 400

- + With key bushing
- + Black immersion-lacquered or galvanised
- + Including 4-point M16/A2 per grating bolt connection



Description	Length	Width	Height	Weight	Inlet opening	Inlet cross section	Load class DIN EN 1433	Article No.
black	500 mm	537 mm	45 mm	44.5 kg	MW 20/30 mm	2310 cm ² /m	A 15 - E 600	150487
galvanised	500 mm	537 mm	45 mm	47.4 kg	MW 20/30 mm	2310 cm ² /m	A 15 - E 600	150487v

Service key

- + For shut-off outfall unit
- + For manuel operation



Description	Weight	Article No.
Service key	3.4 kg	044303

MW = mesh width, article no. with v = galvanised
Exception up to D 400: Not for use across the carriage- way of highways or motorways.