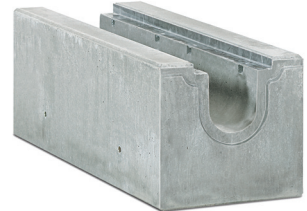
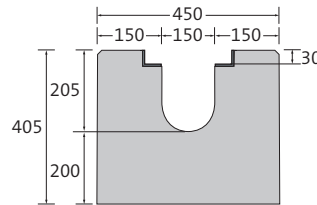


BIRCOsolid grid channels | NW 150

The reinforced concrete channel for use with mildly aggressive agents

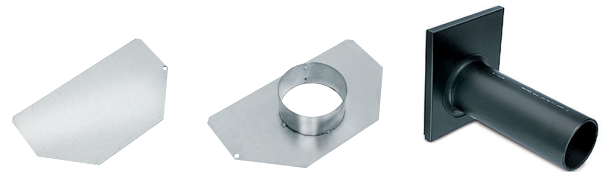
Channel elements | without internal inbuilt fall

- + With hot-dipped galvanised solid steel angle for combi-closure system
- + Visible sealing joint
- + Anchor sleeves on the side
- + Fitted with an interior lifting anchor
- + Also available with one-piece hot-dipped galvanised surface protection upon request



Description	Length	Width	Construction height at groove/tongue	Weight	Load class DIN EN 1433	Article No.
Channel No. 0/0	1000 mm	450 mm	405/405 mm	380.0 kg	A 15 – F 900	015101
Channel No. 0/0	1500 mm	450 mm	405/405 mm	570.0 kg	A 15 – F 900	015102
Channel No. 0/0	4000 mm	450 mm	405/405 mm	1520.0 kg	A 15 – F 900	015103

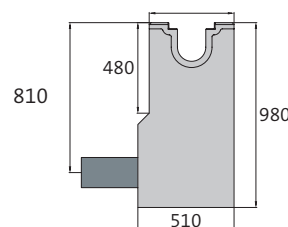
End caps



Description	Width	For construction height	Weight	Article No.
End cap, galvanised	450 mm	405 mm	2.0 kg	015113
End cap with outlet DN 150, galvanised	450 mm	405 mm	2.2 kg	015111
End cap with outlet DA 160, PEHD, factory assembled	450 mm	405 mm	3.4 kg	015112

In-line outfall unit | with pipe support | 1-piece

- + 1- or 2-sided channel connection
- + Galvanised silt bucket
- + Integrated pipe support for DN 150 connection
- + Without odour trap
- + With hot-dipped galvanised solid steel angle for combi-closure system
- + Visible sealing joint
- + Also available with one-piece hot-dipped galvanised surface protection upon request

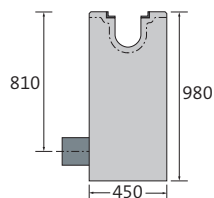


Description	Length	Width at angle/ground	Construction height	Weight	Load class DIN EN 1433	Article No.
In-line outfall unit	500 mm	450/510 mm	980 mm	364.4 kg	A 15 – F 900	015135

Exception up to D 400: Not for use across the carriage-way of highways or motorways

In-line outfall units | with PEHD pipe support | 1-piece

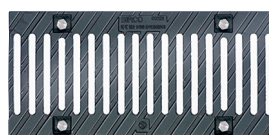
- + 1- or 2-sided channel connection
- + Galvanised silt bucket
- + PEHD pipe support DA 160x9.1 - SDR 17, length 300 mm
- + Lateral drainage connection
- + With hot-dipped galvanised solid steel angle for combi-closure system
- + Visible sealing joint
- + Also available with one-piece hot-dipped galvanised surface protection upon request



Description	Length	Width	Construction height	Weight	Load class DIN EN 1433	Article No.
In-line outfall unit	500 mm	450/510 mm	980 mm	364.3 kg	A 15 – F 900	015136

Cast slotted gratings

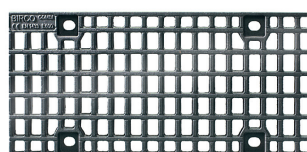
- + Black immersion-lacquered or galvanised
- + 8 point per metre M12/A2 bolt connection



Description	Length	Width	Height	Weight	Inlet opening	Inlet cross section	Load class DIN EN 1433	Article No.
black	500 mm	237 mm	30 mm	10.7 kg	SW 150/12 mm	644 cm ² /m	A 15 – E 600	150175
galvanised	500 mm	237 mm	30 mm	10.2 kg	SW 150/12 mm	644 cm ² /m	A 15 – E 600	150175v
black	500 mm	237 mm	30 mm	12.4 kg	SW 150/12 mm	644 cm ² /m	A 15 – F 900	150178

Mesh gratings | cast

- + Black immersion-lacquered or galvanised
- + 8 point per metre M12/A2 bolt connection



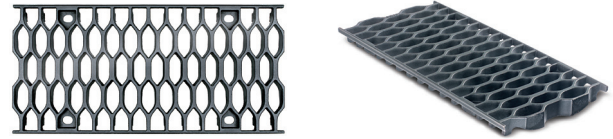
Description	Length	Width	Height	Weight	Inlet opening	Inlet cross section	Load class DIN EN 1433	Article No.
black	500 mm	237 mm	30 mm	11.2 kg	MW 20/30 mm	1110 cm ² /m	A 15 – E 600	150186
galvanised	500 mm	237 mm	30 mm	11.2 kg	MW 20/30 mm	1110 cm ² /m	A 15 – E 600	150186v

SW = slot width, MW = mesh width, article no. with v = galvanised
Exception up to D 400: Not for use across the carriage- way of highways or motorways.

BIRCOsolid grid channels NW 150

Honeycomb gratings | cast

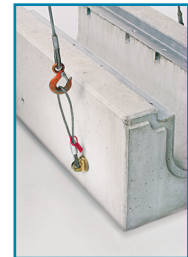
- + Black immersion-lacquered or galvanised
- + 8 point per metre M12/A2 bolt connection



Description	Length	Width	Height	Weight	Inlet opening	Inlet cross section	Load class DIN EN 1433	Article No.
black	500 mm	237 mm	30 mm	7.6 kg	MW 24/59 mm	1396 cm ² /m	A 15 – E 600	150179
galvanised	500 mm	237 mm	30 mm	7.6 kg	MW 24/59 mm	1396 cm ² /m	A 15 – E 600	150179v

Hangers for RD 16 piping | can be mounted externally

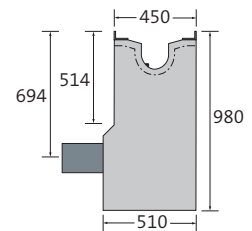
- + Commonly available RD 16 piping hangers are required for laying the concrete parts
- + For safety reasons, simple rope loops may not be used



Description	Weight	Article No.
Hanger RD 16	0.6 kg	606037

Shut-off outfall unit NW 300 | for channels NW 150 | 1-piece

- + 1- or 2-sided channel connection up to NW 300 (on request with end caps / adapter caps for channel connection mounted ex-works)
- + Manually operated valve flap DN 150
- + On request also with electrical or pneumatical valve flap
- + Galvanised silt bucket
- + PEHD pipe support DA 160x9.1 - SDR 17 (length 300 mm)
- + Pipe connector at right angles to channel line
- + With hot-dipped galvanised solid steel angle for combi-closure system
- + Visible sealing joint
- + Other outlets on request
- + Not certificated



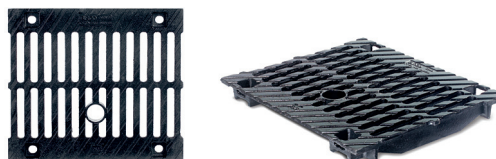
Description	Length	Width at angle/ bottom	Construction height	Weight	Load class DIN EN 1433	Article No.
Shut-off outfall unit	500 mm	450/510 mm	980 mm	360.0 kg	A 15 – F 900	015396

MW = mesh width, article no. with v = galvanised, Exception up to D 400: Not for use across the carriage- way of highways or motorways



Cast slotted gratings | twofold | for shut-off outfall unit NW 300

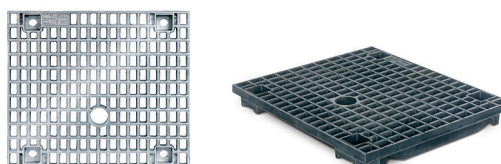
- + With key bushing
- + Black immersion-lacquered
- + Including 4-point M16/A2 per grating bolt connection



Description	Length	Width	Height	Weight	Inlet opening	Inlet cross section	Load class DIN EN 1433	Article No.
black	500 mm	437 mm	45 mm	23.0 kg	SW 142/20 mm	746 cm ² /m	A 15 – C 250	150371
black	500 mm	437 mm	45 mm	30.9 kg	SW 142/20 mm	746 cm ² /m	A 15 – E 600	150372

Mesh gratings | cast | for shut-off outfall unit NW 300

- + With key bushing
- + Black immersion-lacquered or galvanised
- + Including 4-point M16/A2 per grating bolt connection



Description	Length	Width	Height	Weight	Inlet opening	Inlet cross section	Load class DIN EN 1433	Article No.
black	500 mm	437 mm	45 mm	26.9 kg	MW 20/30 mm	1080 cm ² /m	A 15 – E 600	150387
galvanised	500 mm	437 mm	45 mm	26.9 kg	MW 20/30 mm	1080 cm ² /m	A 15 – E 600	150387v

Service key

- + For shut-off outfall unit
- + For manual operation



Description	Weight	Article No.
Service key	3.4 kg	044303