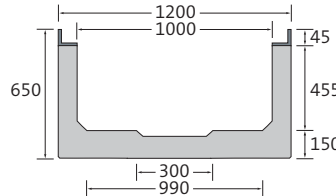


BIRCOsir | NW 1000

Stability and Diversity

Channel element | without internal inbuilt fall

- + Reinforced concrete C 40/50
- + Cast-in anchor sleeves RD 14 for mechanical installation
- + Hot-dipped galvanised solid steel angle for combi-closure system
- + As special solution also with stainless steel angle (V2A, combi-closure system not in V2A)
- + Safety sealing joint



Description	Length	Width at top/at ground	Construction height at groove / tongue	Weight	Load Class DIN EN 1433	Article No.
Channel no. 0/0	2000 mm	1200/1200 mm	650/650 mm	1350.0 kg	A 15 – F 900	020934

End caps

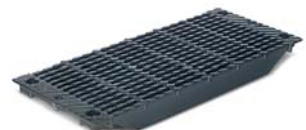
- + Also available in stainless steel (V2A)



Description	Width	For construction height	Weight	Article no.
End cap, galvanised	1200 mm	650 mm	21.5 kg	020940
End cap with outlet DN 300, galvanised	1200 mm	650 mm	23.5 kg	020945

Ductile iron slotted grating | sixfold

- + Black immersion-lacquered
- + 8 point per metre M16/A2 bolt connection



Description	Length	Width	Height	Weight	Inlet opening	Inlet cross section	Load Class DIN EN 1433	Article No.
black	500 mm	1184 mm	45 mm	151.4 kg	SW 155/18 mm	4200 cm ² /m	A 15 – D 400	020975

SW = Slot width
Exception up to D 400: Not for use across the carriage-way of highways or motorways

