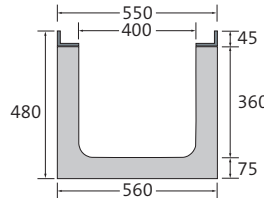


BIRCOprotect | NW 400

Safe groundwater protection even with heavy loads

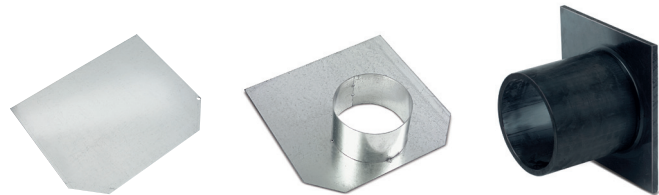
Channel elements | without internal inbuilt fall

- + With hot-dipped galvanised solid steel angles for combi-closure system
- + As special solution also with stainless steel angles (V2A/V4A, combi-closure system not in stainless steel)
- + Visible sealing joint



Description	Length	Width at top/ at ground	Height at groove/tongue	Weight	Load class DIN EN 1433	Article No.
No. 0/0	1000 mm	550/560 mm	480/480 mm	245.2 kg	A 15 – F 900	042426
No. 0/0	2000 mm	550/560 mm	480/480 mm	483.0 kg	A 15 – F 900	042434

End caps

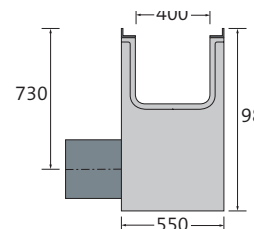


Description	Width	For construction height	Weight	Article No.
End cap, galvanised	550 mm	480 mm	5.5 kg	042440
End cap with outlet DN 300, galvanised	550 mm	480 mm	7.1 kg	042445
End cap with outlet DA 315 x 17.9 - SDR 17, PEHD, length 300 mm	550 mm	480 mm	9.8 kg	044401

Galvanised end caps also available in stainless steel.

In-line outfall unit | with pipe support | one-piece

- + 1- or 2-sided channel connection
- + Galvanised silt bucket
- + Integrated pipe support for DN 300 connection
- + Lateral drainage connection
- + With hot-dipped galvanised solid steel angles for combi-closure system
- + As special solution also with stainless steel angles (V2A/V4A, combi-closure system not in stainless steel)
- + Visible sealing joint
- + Sockets for smaller pipe dimensions also available



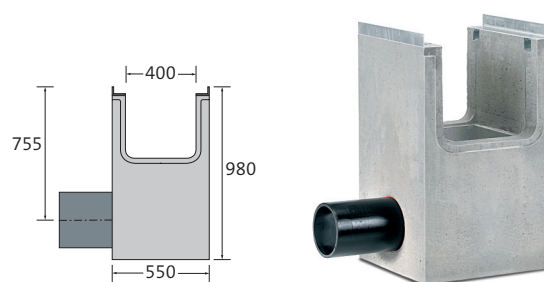
Description	Length	Width at top/ at ground	Construction height	Weight	Load class DIN EN 1433	Article No.
In-line outfall unit	500 mm	550/550 mm	980 mm	255.0 kg	A 15 – F 900	044410

Exception up to D 400: Not for use across the carriage- way of highways or motorways.



In-line outfall unit | with PEHD pipe support | 1-piece

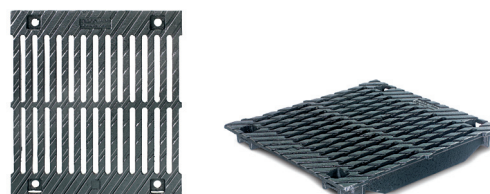
- + 1- or 2-sided channel connection
- + Galvanised silt bucket
- + PEHD pipe support DA 315 x 17.9 - SDR 17, length 300 mm
- + Lateral drainage connection
- + With hot-dipped galvanised solid steel angles for combi-closure system
- + As special solution also with stainless steel angles (V2A/V4A, combi-closure system not in stainless steel)
- + Visible sealing joint
- + Other outlets on request



Description	Length	Width at top/ at ground	Construction height	Weight	Load class DIN EN 1433	Article No.
In-line outfall unit	500 mm	550/550 mm	980 mm	245.0 kg	A 15 – F 900	044400

Cast slotted gratings | twofold

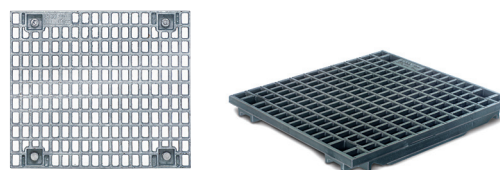
- + Black immersion-lacquered or galvanised
- + 8 point per metre M16/A2 bolt connection
- + 8 point per metre Easylock-fastening (alternatively)



Description	Length	Width	Height	Weight	Inlet opening	Inlet cross section	Load class DIN EN 1433	Article No.
black	500 mm	537 mm	45 mm	45.2 kg	SW 190/16 mm	1771 cm ² /m	A 15 – E 600	140475/e
galvanised	500 mm	537 mm	45 mm	42.3 kg	SW 190/16 mm	1771 cm ² /m	A 15 – E 600	140475v/ve
black	500 mm	537 mm	45 mm	52.1 kg	SW 190/16 mm	1771 cm ² /m	A 15 – F 900	140478

Mesh gratings | cast

- + Black immersion-lacquered or galvanised
- + 8 point per metre M16/A2 bolt connection
- + 8 point per metre Easylock-fastening (alternatively)



Description	Length	Width	Height	Weight	Inlet opening	Inlet cross section	Load class DIN EN 1433	Article No.
black	500 mm	537 mm	45 mm	44.5 kg	MW 20/30 mm	2310 cm ² /m	A 15 – E 600	140486/e
galvanised	500 mm	537 mm	45 mm	47.4 kg	MW 20/30 mm	2310 cm ² /m	A 15 – E 600	140486v/ve

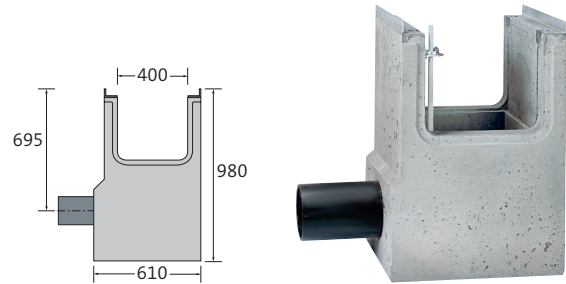
Article No. with v = galvanised, article No. with e = with Easylock, SW = slot width, MW = mesh width
Exception up to D 400: Not for use across the carriage- way of highways or motorways.



BIRCOprotect NW 400

Shut-off outfall unit | 1-piece

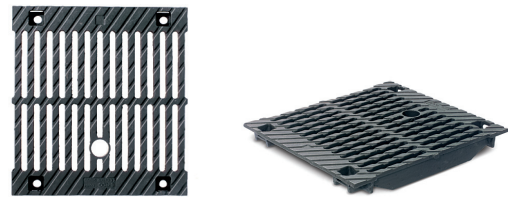
- + 1- or 2-sided channel connection up to NW 400 (on request with end caps / adapter caps for channel connection mounted ex-works)
- + Manually operated valve flap DN 200
- + On request also with electrical or pneumatical valve flap
- + Galvanised silt bucket
- + PEHD pipe support DA 225x12.8 - SDR 17 (length 300 mm)
- + Pipe support lateral to channel line
- + With hot-dipped galvanised solid steel angles for combi-closure system
- + Visible sealing joint
- + Other outlets on request
- + Not DIBt certificated



Description	Length	Width at top/ at ground	Construction height	Weight	Load class DIN EN 1433	Article No.
Shut-off outfall unit	500 mm	550/610 mm	980 mm	366.0 kg	A 15 – E 600	044405

Cast slotted gratings | twofold | for shut-off outfall unit

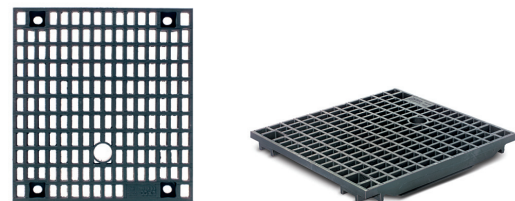
- + With key bushing
- + Black immersion-lacquered
- + Including 4-point M16/A2 per grating bolt connection



Description	Length	Width	Height	Weight	Inlet opening	Inlet cross section	Load class DIN EN 1433	Article No.
black	500 mm	537 mm	45 mm	40.0 kg	SW 190/16 mm	1771 cm ² /m	A 15 – E 600	044404

Mesh gratings | cast | for shut-off outfall unit

- + With key bushing
- + Black immersion-lacquered or galvanised
- + Including 4-point M16/A2 per grating bolt connection



Description	Length	Width	Height	Weight	Inlet opening	Inlet cross section	Load class DIN EN 1433	Article No.
black	500 mm	537 mm	45 mm	47.4 kg	MW 20/30 mm	2310 cm ² /m	A 15 – E 600	044411
galvanised	500 mm	537 mm	45 mm	47.4 kg	MW 20/30 mm	2310 cm ² /m	A 15 – E 600	044411v

Article No. with v = galvanised, SW = slot width, MW = mesh width
Exception up to D 400: Not for use across the carriage- way of highways or motorways.



Service key

- + For shut-off outfall unit
- + For manuel operation



Description	Weight	Article No.
Service key	3.4 kg	044303



BIRCOprotect | PEHD

- + PEHD (Polyethylen High Density) is continuously resistant against many aggressive media. Pipe supports and end caps in PEHD are available for BIRCOprotect.

Exception up to D 400: Not for use across the carriage- way of highways or motorways.

