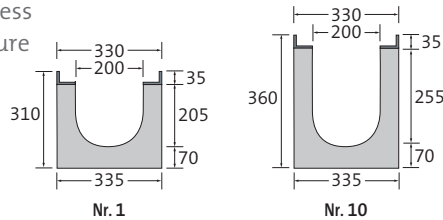


BIRCOprotect | NW 200

Safe groundwater protection even with heavy loads

Channel elements | 0.5% internal inbuilt fall

- + With hot-dipped galvanised solid steel angles for combi-closure system
- + As special solution also with stainless steel angles (V2A/V4A, combi-closure system not in stainless steel)
- + Visible sealing joint



Description	Length	Width at top/ at ground	Height at groove/tongue	Weight	Load class DIN EN 1433	Article No.
Channel No. 1	1000 mm	330/335 mm	310/315 mm	140.9 kg	A 15 – F 900	042201
Channel No. 2	1000 mm	330/335 mm	315/320 mm	141.9 kg	A 15 – F 900	042202
Channel No. 3	1000 mm	330/335 mm	320/325 mm	142.9 kg	A 15 – F 900	042203
Channel No. 4	1000 mm	330/335 mm	325/330 mm	144.9 kg	A 15 – F 900	042204
Channel No. 5	1000 mm	330/335 mm	330/335 mm	145.9 kg	A 15 – F 900	042205
Channel No. 6	1000 mm	330/335 mm	335/340 mm	148.9 kg	A 15 – F 900	042206
Channel No. 7	1000 mm	330/335 mm	340/345 mm	149.9 kg	A 15 – F 900	042207
Channel No. 8	1000 mm	330/335 mm	345/350 mm	150.9 kg	A 15 – F 900	042208
Channel No. 9	1000 mm	330/335 mm	350/355 mm	153.9 kg	A 15 – F 900	042209
Channel No. 10	1000 mm	330/335 mm	355/360 mm	154.9 kg	A 15 – F 900	042210

Channel elements | without internal inbuilt fall

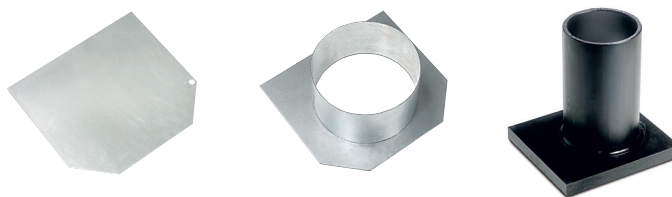
- + With hot-dipped galvanised solid steel angles for combi-closure system
- + As special solution also with stainless steel angles (V2A/V4A, combi-closure system not in stainless steel)
- + Visible sealing joint

Description	Length	Width at top/ at ground	Height at groove/tongue	Weight	Load class DIN EN 1433	Article No.
Channel No. 0/0	500 mm	330/335 mm	310/310 mm	70.5 kg	A 15 – F 900	042231
Channel No. 0/0	1000 mm	330/335 mm	310/310 mm	139.9 kg	A 15 – F 900	042226
Channel No. 5/0	1000 mm	330/335 mm	335/335 mm	145.9 kg	A 15 – F 900	042227
Channel No. 10/0	1000 mm	330/335 mm	360/360 mm	154.9 kg	A 15 – F 900	042228

Exception up to D 400: Not for use across the carriage- way of highways or motorways.



End caps

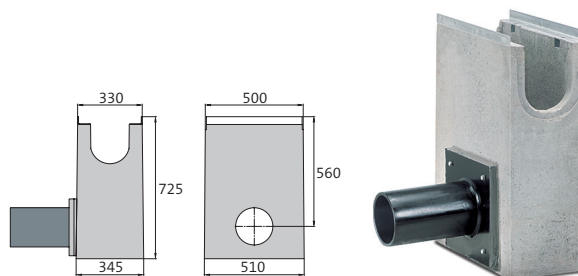


Description	Width	For construction height	Weight	Article No.
End cap galvanised, No. 0/0 – 6	330 mm	310 – 340 mm	1.5 kg	042240
End cap galvanised, No. 7 – 10	330 mm	340 – 360 mm	1.7 kg	042241
End cap with outlet DN 200, galvanised, No. 0/0	330 mm	310 mm	2.1 kg	042245
End cap with outlet DN 200, galvanised, No. 5/0	330 mm	335 mm	2.3 kg	042246
End cap with outlet DN 200, galvanised, No. 10/0	330 mm	360 mm	2.5 kg	042247
End cap with outlet DA 200 x 4.9 - SDR 41, PEHD, No. 0/0, length 300 mm	330 mm	310 mm	4.8 kg	044206
End cap with outlet DA 200 x 4.9 - SDR 41, PEHD, No. 5/0, length 300 mm	330 mm	335 mm	5.0 kg	044207
End cap with outlet DA 200 x 4.9 - SDR 41, PEHD, No. 10/0, length 300 mm	330 mm	360 mm	5.2 kg	044208

Galvanised end caps also available in stainless steel.

In-line outfall unit | with PEHD pipe support | 1-piece

- + 1- or 2-sided channel connection
- + Galvanised silt bucket
- + PEHD pipe support DA 200 x 4.9 - SDR 41, length 300 mm
- + Lateral drainage connection
- + With hot-dipped galvanised solid steel angles for combi-closure system
- + As special solution also with stainless steel angles (V2A/V4A, combi-closure system not in stainless steel)
- + Visible sealing joint
- + Other outlets on request



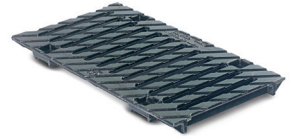
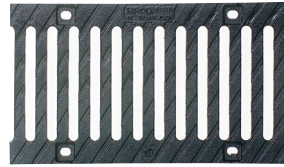
Description	Length	Width at top/ at ground	Construction height	Weight	Load class DIN EN 1433	Article No.
In-line outfall unit No. 0/0	500 mm	330/345 mm	725 mm	145.0 kg	A 15 – F 900	044203
In-line outfall unit No. 5/0	500 mm	330/345 mm	725 mm	145.0 kg	A 15 – F 900	044204
In-line outfall unit No. 10/0	500 mm	330/345 mm	725 mm	145.0 kg	A 15 – F 900	044205

Exception up to D 400: Not for use across the carriage- way of highways or motorways.



Cast slotted gratings

- + Black immersion-lacquered
- + Also available galvanised
- + 8 point per metre M12/A2 bolt connection



Description	Length	Width	Height	Weight	Inlet opening	Inlet cross section	Load class DIN EN 1433	Article No.
black	500 mm	317 mm	35 mm	17.3	SW 200/18 mm	802 cm ² /m	A 15 – F 900	140278