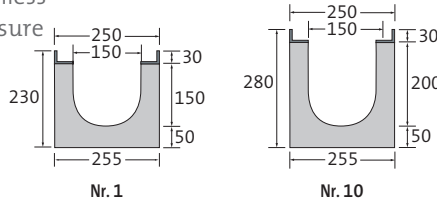


BIRCOprotect | NW 150

Safe groundwater protection even with heavy loads

Channel elements | 0.5% internal inbuilt fall

- + With hot-dipped galvanised solid steel angles for combi-closure system
- + As special solution also with stainless steel angles (V2A/V4A, combi-closure system not in stainless steel)
- + Visible sealing joint



Description	Length	Width at top/ at ground	Height at groove/tongue	Weight	Load class DIN EN 1433	Article No.
Channel No. 1	1000 mm	250/255 mm	230/235 mm	77.3 kg	A 15 – F 900	042101
Channel No. 2	1000 mm	250/255 mm	235/240 mm	78.3 kg	A 15 – F 900	042102
Channel No. 3	1000 mm	250/255 mm	240/245 mm	79.3 kg	A 15 – F 900	042103
Channel No. 4	1000 mm	250/255 mm	245/250 mm	80.3 kg	A 15 – F 900	042104
Channel No. 5	1000 mm	250/255 mm	250/255 mm	81.3 kg	A 15 – F 900	042105
Channel No. 6	1000 mm	250/255 mm	255/260 mm	82.3 kg	A 15 – F 900	042106
Channel No. 7	1000 mm	250/255 mm	260/265 mm	83.3 kg	A 15 – F 900	042107
Channel No. 8	1000 mm	250/255 mm	265/270 mm	84.3 kg	A 15 – F 900	042108
Channel No. 9	1000 mm	250/255 mm	270/275 mm	85.3 kg	A 15 – F 900	042109
Channel No. 10	1000 mm	250/255 mm	275/280 mm	86.3 kg	A 15 – F 900	042110

Channel elements | without internal inbuilt fall

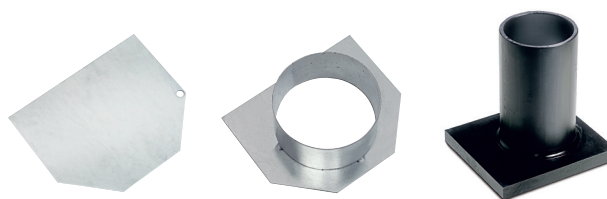
- + With hot-dipped galvanised solid steel angles for combi-closure system
- + As special solution also with stainless steel angles (V2A/V4A, combi-closure system not in stainless steel)
- + Visible sealing joint

Description	Length	Width at top/ at ground	Height at groove/tongue	Weight	Load class DIN EN 1433	Article No.
Channel No. 0/0	500 mm	250/255 mm	230/230 mm	40.2 kg	A 15 – F 900	042131
Channel No. 0/0	1000 mm	250/255 mm	230/230 mm	75.3 kg	A 15 – F 900	042126
Channel No. 5/0	1000 mm	250/255 mm	255/255 mm	81.3 kg	A 15 – F 900	042127
Channel No. 10/0	1000 mm	250/255 mm	280/280 mm	87.3 kg	A 15 – F 900	042128

Exception up to D 400: Not for use across the carriage-way of highways or motorways.



End caps

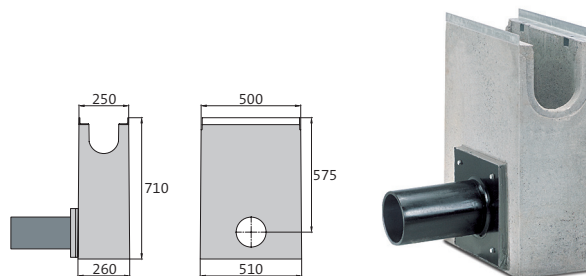


Description	Width	For construction height	Weight	Article No.
End cap, galvanised, No. 0/0 – 4	250 mm	230 – 250 mm	0.8 kg	042190
End cap, galvanised, No. 5 – 7	250 mm	250 – 270 mm	0.8 kg	042191
End cap, galvanised, No. 8 – 10	250 mm	270 – 280 mm	0.8 kg	042192
End cap with outlet DN 150, galvanised, No. 0/0	250 mm	230 mm	1.2 kg	042145
End cap with outlet DN 150, galvanised, No. 5/0	250 mm	255 mm	1.3 kg	042146
End cap with outlet DN 150, galvanised, No. 10/0	250 mm	280 mm	1.3 kg	042147
End cap with outlet DA 160 x 9.1 - SDR 17, PEHD, No. 0/0, Length 300 mm	250 mm	230 mm	2.6 kg	044106
End cap with outlet DA 160 x 9.1 - SDR 17, PEHD, No. 5/0, Length 300 mm	250 mm	255 mm	2.7 kg	044107
End cap with outlet DA 160 x 9.1 - SDR 17, PEHD, No. 10/0, Length 300 mm	250 mm	280 mm	2.8 kg	044108

Galvanised end caps also available in stainless steel.

In-line outfall unit | with PEHD pipe support | 1-piece

- + 1- or 2-sided channel connection
- + PP-silt bucket (also galvanised)
- + PEHD pipe support DA 160x9.1 - SDR 17.6, length 300 mm
- + Lateral drainage connection
- + With hot-dipped galvanised solid steel angles for combi-closure system
- + As special solution also with stainless steel angles (V2A/V4A, combi-closure system not in stainless steel)
- + Visible sealing joint
- + Other outlets on request



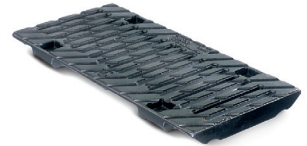
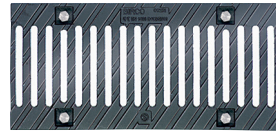
Description	Length	Width at top/ at ground	Construction height	Weight	Load class DIN EN 1433	Article No.
In-line outfall unit No. 0/0	500 mm	250/260 mm	710 mm	114.0 kg	A 15 – F 900	044103
In-line outfall unit No. 5/0	500 mm	250/260 mm	710 mm	114.0 kg	A 15 – F 900	044104
In-line outfall unit No. 10/0	500 mm	250/260 mm	710 mm	114.0 kg	A 15 – F 900	044105

Exception up to D 400: Not for use across the carriage- way of highways or motorways.



Cast slotted gratings

- + Black immersion-lacquered or galvanised
- + 8 point per metre M12/A2 bolt connection
- + 8 point per metre Easylock-fastening (alternatively)



Description	Length	Width	Height	Weight	Inlet opening	Inlet cross section	Load class DIN EN 1433	Article No.
black	500 mm	237 mm	30 mm	8.8 kg	SW 150/12 mm	644 cm ² /m	A 15 – C 250	140172/e
black	500 mm	237 mm	30 mm	10.7 kg	SW 150/12 mm	644 cm ² /m	A 15 – E 600	140175/e
galvanised	500 mm	237 mm	30 mm	10.2 kg	SW 150/12 mm	644 cm ² /m	A 15 – E 600	140175v/ve
black	500 mm	237 mm	30 mm	12.4 kg	SW 150/12 mm	644 cm ² /m	A 15 – F 900	140178

Mesh gratings | cast

- + Black immersion-lacquered or galvanised
- + 8 point per metre M12/A2 bolt connection
- + 8 point per metre Easylock-fastening (alternatively)



Description	Length	Width	Height	Weight	Inlet opening	Inlet cross section	Load class DIN EN 1433	Article No.
black	500 mm	237 mm	30 mm	11.2 kg	MW 20/30 mm	1110 cm ² /m	A 15 – E 600	140186/e
galvanised	500 mm	237 mm	30 mm	11.2 kg	MW 20/30 mm	1110 cm ² /m	A 15 – E 600	140186v/ve

Honeycomb gratings | cast

- + Black immersion-lacquered or galvanised
- + 8 point per metre M12/A2 bolt connection
- + 8 point per metre Easylock-fastening (alternatively)

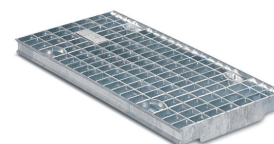


Description	Length	Width	Höhe	Weight	Inlet opening	Inlet cross section	Load class DIN EN 1433	Article No.
black	500 mm	237 mm	30 mm	7.6 kg	MW 24/59 mm	1396 cm ² /m	A 15 – E 600	140179/e
galvanised	500 mm	237 mm	30 mm	7.6 kg	MW 24/59 mm	1396 cm ² /m	A 15 – E 600	140179v/ve

Article No. with v = galvanised, article No. with e = with Easylock, SW = slot width, MW = mesh width
Exception up to D 400: Not for use across the carriage- way of highways or motorways.

Mesh gratings

- + Hot-dipped galvanised
- + 4-point per grating M12/A2 bolt connection
- + 4-point per grating Easylock-fastening (alternatively)
- + On request also available in stainless steel (V2A, without Easylock)



Description	Length	Width	Height	Weight	Inlet opening	Inlet cross section	Load class DIN EN 1433	Article No.
hot-dipped galvanised	500 mm	237 mm	30 mm	3.8 kg	MW 30/30 mm	1285 cm ² /m	A 15 – C 250	140162/e
hot-dipped galvanised	1000 mm	237 mm	30 mm	7.1 kg	MW 30/30 mm	1285 cm ² /m	A 15 – C 250	140152/e
hot-dipped galvanised	500 mm	237 mm	30 mm	4.4 kg	MW 30/15 mm	1185 cm ² /m	A 15 – C 250	140163/e
hot-dipped galvanised	1000 mm	237 mm	30 mm	8.3 kg	MW 30/15 mm	1185 cm ² /m	A 15 – C 250	140153/e
hot-dipped galvanised	500 mm	237 mm	30 mm	7.5 kg	MW 20/30 mm	1088 cm ² /m	A 15 – E 600	140164/e
hot-dipped galvanised	1000 mm	237 mm	30 mm	14.5 kg	MW 20/30 mm	1088 cm ² /m	A 15 – E 600	140154/e
hot-dipped galvanised	500 mm	237 mm	30 mm	8.4 kg	MW 20/12 mm	888 cm ² /m	A 15 – E 600	140165/e
hot-dipped galvanised	1000 mm	237 mm	30 mm	16.5 kg	MW 20/12 mm	888 cm ² /m	A 15 – E 600	140155/e



BIRCOprotect | PEHD

- + PEHD (Polyethylen High Density) is continuously resistant against many aggressive media. Pipe supports and end caps in PEHD are available for BIRCOprotect.

Article No. with v = galvanised, article No. with e = with Easylock, MW = mesh width
Exception up to D 400: Not for use across the carriage- way of highways or motorways.

