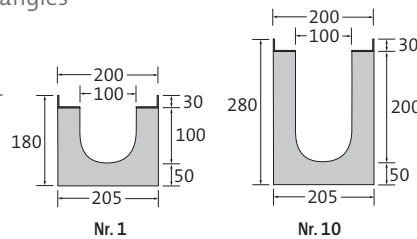


# BIRCOprotect | NW 100

Safe groundwater protection even with heavy loads

## Channel elements | 1% internal inbuilt fall

- + With hot-dipped galvanised solid steel angles for combi-closure system
- + As special solution also with stainless steel angles (V2A/V4A, combi-closure system not in stainless steel)
- + Visible sealing joint



Description	Length	Width at top/ at ground	Height at groove/tongue	Weight	Load class DIN EN 1433	Article No.
Channel No. 1	1000 mm	200/205 mm	180/190 mm	57.3 kg	A 15 - F 900	042001
Channel No. 2	1000 mm	200/205 mm	190/200 mm	57.0 kg	A 15 - F 900	042002
Channel No. 3	1000 mm	200/205 mm	200/210 mm	61.0 kg	A 15 - F 900	042003
Channel No. 4	1000 mm	200/205 mm	210/220 mm	64.3 kg	A 15 - F 900	042004
Channel No. 5	1000 mm	200/205 mm	220/230 mm	66.3 kg	A 15 - F 900	042005
Channel No. 6	1000 mm	200/205 mm	230/240 mm	68.3 kg	A 15 - F 900	042006
Channel No. 7	1000 mm	200/205 mm	240/250 mm	70.3 kg	A 15 - F 900	042007
Channel No. 8	1000 mm	200/205 mm	250/260 mm	74.3 kg	A 15 - F 900	042008
Channel No. 9	1000 mm	200/205 mm	260/270 mm	76.8 kg	A 15 - F 900	042009
Channel No. 10	1000 mm	200/205 mm	270/280 mm	76.3 kg	A 15 - F 900	042010

## Channel elements | without internal inbuilt fall

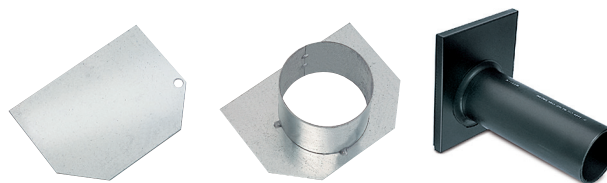
- + With hot-dipped galvanised solid steel angles for combi-closure system
- + As special solution also with stainless steel angles (V2A/V4A, combi-closure system not in stainless steel)
- + Visible sealing joint

Description	Length	Width at top/ at ground	Height at groove/tongue	Weight	Load class DIN EN 1433	Article No.
Channel No. 0/0	500 mm	200/205 mm	180/180 mm	30.7 kg	A 15 - F 900	042031
Channel No. 0/0	1000 mm	200/205 mm	180/180 mm	56.3 kg	A 15 - F 900	042026
Channel No. 5/0	1000 mm	200/205 mm	230/230 mm	67.3 kg	A 15 - F 900	042027
Channel No. 10/0	1000 mm	200/205 mm	280/280 mm	77.3 kg	A 15 - F 900	042028

Exception up to D 400: Not for use across the carriage-way of highways or motorways.



## End caps

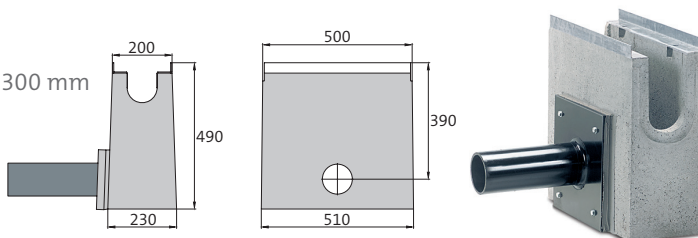


Description	Width	For construction height	Weight	Article No.
End cap, galvanised, No. 0/0 – 3	200 mm	180 – 210 mm	0.5 kg	042090
End cap, galvanised, No. 4 – 7	200 mm	210 – 250 mm	0.6 kg	042091
End cap, galvanised, No. 8 – 10	200 mm	250 – 280 mm	0.7 kg	042092
End cap with outlet DN 100, galvanised, No. 0/0	200 mm	180 mm	0.7 kg	042045
End cap with outlet DN 100, galvanised, No. 5/0	200 mm	230 mm	0.9 kg	042046
End cap with outlet DN 100, galvanised, No. 10/0	200 mm	280 mm	1.1 kg	042047
End cap with outlet DA 110 x 6.3 - SDR 17, PEHD, No. 0/0, length 300 mm	200 mm	180 mm	2.3 kg	044006
End cap with outlet DA 110 x 6.3 - SDR 17, PEHD, No. 5/0, length 300 mm	200 mm	230 mm	2.7 kg	044007
End cap with outlet DA 110 x 6.3 - SDR 17, PEHD, No. 10/0, length 300 mm	200 mm	280 mm	3.1 kg	044008

Galvanised end caps also available in stainless steel.

## In-line outfall unit | with PEHD pipe support | 1-piece

- + 1- or 2-sided channel connection
- + PP-silt bucket (also galvanised)
- + PEHD pipe support DA 110x6.3 - SDR 17, length 300 mm
- + Lateral drainage connection
- + With hot-dipped galvanised solid steel angles for combi-closure system
- + As special solution also with stainless steel angles (V2A/V4A, combi-closure system not in stainless steel)
- + Visible sealing joint
- + Other outlets on request



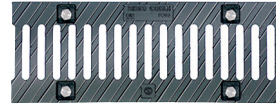
Description	Length	Width at top/ at ground	Construction height	Weight	Load class DIN EN 1433	Article No.
In-line outfall unit No. 0/0	500 mm	200/230 mm	490 mm	73.1 kg	A 15 – F 900	044003
In-line outfall unit No. 5/0	500 mm	200/230 mm	490 mm	73.1 kg	A 15 – F 900	044004
In-line outfall unit No. 10/0	500 mm	200/230 mm	490 mm	73.1 kg	A 15 – F 900	044005

Exception up to D 400: Not for use across the carriage- way of highways or motorways.



### Cast slotted gratings

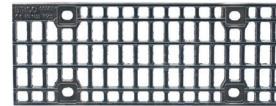
- + Black immersion-lacquered or galvanised
- + 8 point per metre M12/A2 bolt connection
- + 8 point per metre Easylock-fastening (alternatively)



Description	Length	Width	Height	Weight	Inlet opening	Inlet cross section	Load class DIN EN 1433	Article No.
black	500 mm	187 mm	30 mm	5.2 kg	SW 100/13 mm	469 cm <sup>2</sup> /m	A 15 – C 250	140072/e
black	500 mm	187 mm	30 mm	6.4 kg	SW 100/13 mm	469 cm <sup>2</sup> /m	A 15 – E 600	140075/e
galvanised	500 mm	187 mm	30 mm	6.4 kg	SW 100/13 mm	469 cm <sup>2</sup> /m	A 15 – E 600	140075v/ve
black	500 mm	187 mm	30 mm	7.6 kg	SW 100/13 mm	469 cm <sup>2</sup> /m	A 15 – F 900	140078

### Mesh gratings | cast

- + Black immersion-lacquered or galvanised
- + 8 point per metre M12/A2 bolt connection
- + 8 point per metre Easylock-fastening (alternatively)



Description	Length	Width	Height	Weight	Inlet opening	Inlet cross section	Load class DIN EN 1433	Article No.
black	500 mm	187 mm	30 mm	7.2 kg	MW 20/30 mm	876 cm <sup>2</sup> /m	A 15 – E 600	140086/e
galvanised	500 mm	187 mm	30 mm	7.2 kg	MW 20/30 mm	876 cm <sup>2</sup> /m	A 15 – E 600	140086v/ve

## Mesh gratings

- + Hot-dipped galvanised
- + 4-point per grating M12/A2 bolt connection
- + 4-point per grating Easylock-fastening (alternatively)
- + On request also available in stainless steel (V2A, without Easylock)



Description	Length	Width	Height	Weight	Inlet opening	Inlet cross section	Load class DIN EN 1433	Article No.
hot-dipped galvanised	500 mm	187 mm	30 mm	2.8 kg	MW 30/30 mm	1334 cm <sup>2</sup> /m	A 15 – C 250	140062/e
hot-dipped galvanised	1000 mm	187 mm	30 mm	5.6 kg	MW 30/30 mm	1334 cm <sup>2</sup> /m	A 15 – C 250	140052/e
hot-dipped galvanised	500 mm	187 mm	30 mm	3.5 kg	MW 30/12 mm	1154 cm <sup>2</sup> /m	A 15 – C 250	140063/e
hot-dipped galvanised	1000 mm	187 mm	30 mm	6.3 kg	MW 30/12 mm	1154 cm <sup>2</sup> /m	A 15 – C 250	140053/e
hot-dipped galvanised	500 mm	187 mm	30 mm	5.0 kg	MW 20/30 mm	1140 cm <sup>2</sup> /m	A 15 – E 600	140064/e
hot-dipped galvanised	1000 mm	187 mm	30 mm	9.5 kg	MW 20/30 mm	1140 cm <sup>2</sup> /m	A 15 – E 600	140054/e
hot-dipped galvanised	500 mm	187 mm	30 mm	5.8 kg	MW 20/12 mm	1019 cm <sup>2</sup> /m	A 15 – E 600	140065/e
hot-dipped galvanised	1000 mm	187 mm	30 mm	10.9 kg	MW 20/12 mm	1019 cm <sup>2</sup> /m	A 15 – E 600	140055/e

## **i** BIRCOprotect | PEHD

- + PEHD (Polyethylen High Density) is continuously resistant against many aggressive media. Pipe supports and end caps in PEHD are available for BIRCOprotect.

Article No. with e = with Easylock, MW = mesh width  
Exception up to D 400: Not for use across the carriage- way of highways or motorways.

